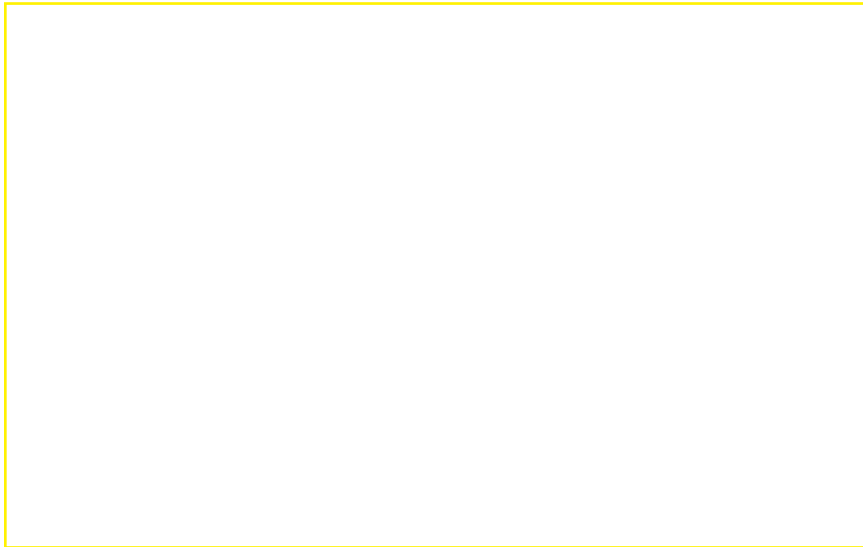


# **KEEP THINKING** ABOUT THE SHOW!

What 5 words describe Laura's paintings?

What was your favorite painting in the show?

Draw your own landscape to add to the show:



For more about the artist, visit [secondstreetgallery.org](http://secondstreetgallery.org)

SSG is a 501c3 nonprofit art space dedicated to bringing the best of contemporary art and creativity to central Virginia. Our outreach projects are supported in part by the Bama Works Fund, the LEAW Family Foundation, and the J&E Berkley Foundation. Thank you for your support.

**second street gallery**

115 SECOND STREET SE CHARLOTTESVILLE, VA 22902  
434-977-7284 WWW.SECONDSTREETGALLERY.ORG

For more information,  
contact Meghan Smith at  
[meghan@secondstreetgallery.org](mailto:meghan@secondstreetgallery.org).

# SSSG ACTIVITY BOOK

DECEMBER 2020 - JANUARY 2021

**LAURA WOOTEN: VIEW FROM THE RIDGE**

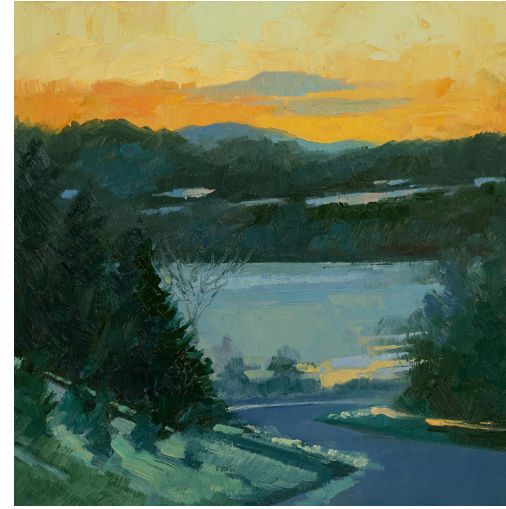
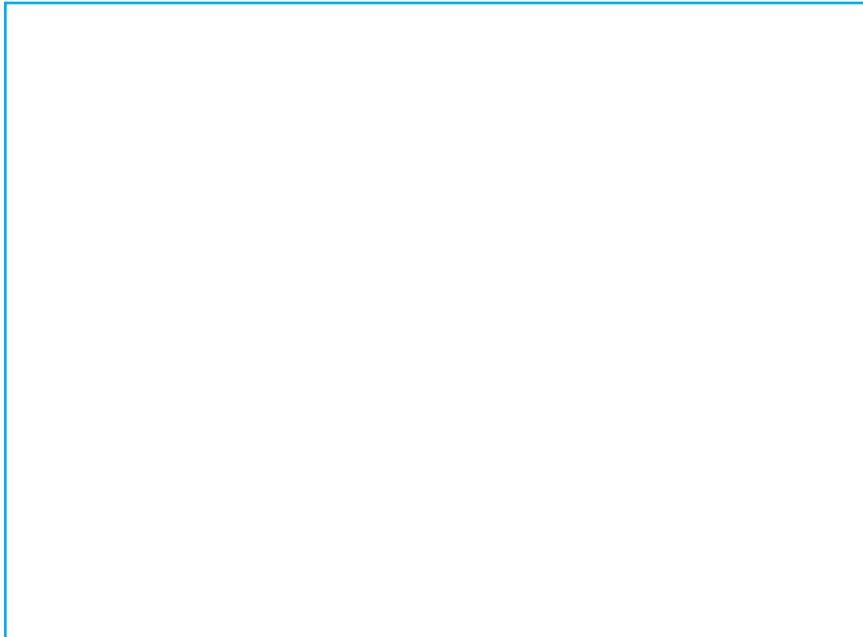
**Keep this book  
as a souvenir  
of your visit!**

Activities adapted from content written by  
exhibition partner Apex Clean Energy.



## LOOK

Look out a window at home and draw what you see! Are there trees? Buildings? Cars? People? What colors do you see? What is the weather today?



## REMEMBER

Close your eyes and remember a place that makes you happy. Draw that place below!

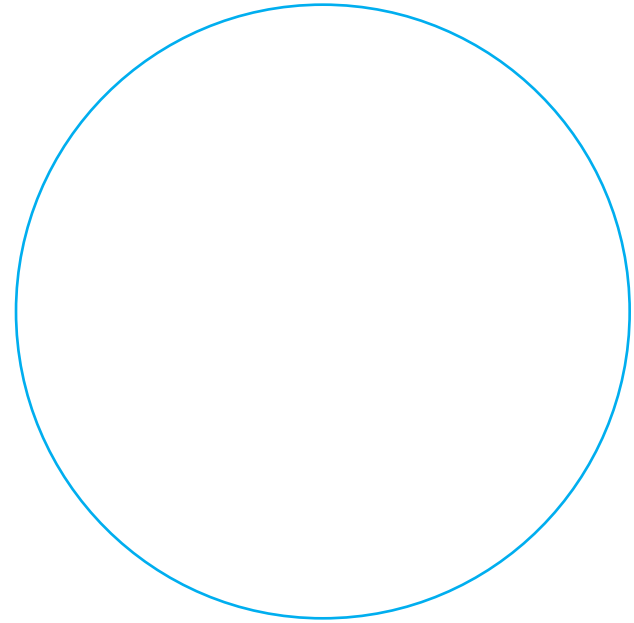




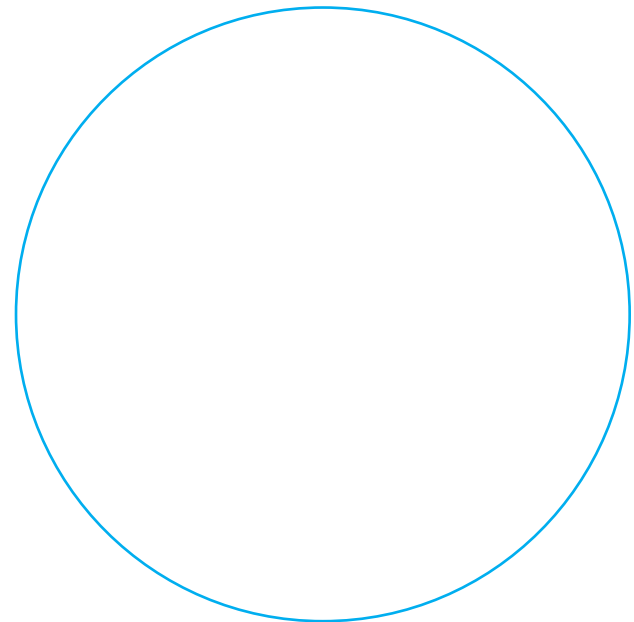
**“We do not inherit the Earth from our ancestors; we borrow it from our children.”**

If we treat the land and people around us with respect, the next generations will be healthy and happy!

Draw our world **now**:



Draw how you imagine our world will look like **in 100 years**:



## REPEAT! REPEAT!

Laura Wooten paints the same scene over and over again. Find ONE object to draw. Draw it four different ways in the boxes below.




## IMAGINE

Fill in the blank space between the trees. Imagine mountains, trees, grass, houses, people, animals, and more!